

FIDEM TOKYO 2020

FIDEM XXXVI
Congress

online

1st - 4th Dec.

Exhibition

at Hyakudan Kaidan
Hotel Gajoen Tokyo

2nd - 16th Dec.



Netherlands



As always, the Dutch medals show a broad variety in techniques and shapes. Thanks to the amount of Dutch FIDEM members, the number of Dutch medals in the exhibition is growing compared to the previous exhibition. The medals were selected by a jury, consisting of the artists Loes Schellekens and Geer Steyn, next to the two Dutch FIDEM delegates. Jennifer Hoes (1973) is the new Dutch vice delegate. She succeeded Linda Verkaaik as a vice delegate on 22 November 2019, during the yearly meeting of Dutch FIDEM members. Verkaaik had been active since she took over the task from Guus Hellegers. She started her work with preparations for the exhibition and the congress of Tampere, Finland, in 2010. In those days the FIDEM was supported by the Money Museum (Geldmuseum), with Carolien Voigtmann as delegate. Verkaaik had always emphasised the innovative aspect of medals in particular. Absolute highlights were the separate exhibitions with hanging medals during the congresses in Bulgaria and Belgium, which wouldn't have been possible without her seemingly endless energy. Thank you, Linda!

During the 2019 meeting of Dutch FIDEM members – at the Erasmus University Rotterdam, home of the Netherlands Economic Medal Cabinet (Nederlands Economisch Penningkabinet) – it was agreed that the participation fee for non-members will be increased to € 50. Young artists of maximum 30 years of age will continue to pay € 20. After paying the participation fees (€ 20 per artist) to the FIDEM bank account, the remaining money is – together with a generous donation of the Foundation of Dutch Medal Cabinets (Stichting Nederlandse Penningkabinetten) – used for the shipment of the medals to Japan.

Unfortunately, during the last period several Dutch artists passed away: Guus Hellegers (1937-2019, honoured with the J. Sanford Saltus Award in 2001), Jannes Limperg (1942-2019), Lucie Nijland (1944-2019) and Hanneke Mols-van Gool (1933-2020).

The exhibition shows not only work of artists who participated in previous FIDEM exhibitions, like Henny van Grol, Pier van Leest, Frank Letterie and Mirjam Mieras. New artists – or artists who have been absent for many years – participate as well, like Michiel Deylius, Lina Hodoroba, Ad Merx and Marie-José Wessels. Hopefully, the 'new blood' helps in continuing the production of art medals in the future. In an attempt to attract new, young artists, the Dutch Art Medal Association (Vereniging voor Penningkunst) issued a contest. The winner is Menno Hele (1988). His medal will be produced during 2020 and is also part of the FIDEM exhibition.

The Dutch have chosen a voluntary theme for this exhibition, referring to the Hyakudan Kaidan exhibition space; The 100-step stairway. This theme is about idealism and experiment. Part of the medals can be directly related to this theme.

Last but not least: the Dutch medals could not be selected and transported without the support of the Dutch Art Medal Association, the Foundation of Dutch Medal Cabinets and – of course – the Dutch FIDEM members. Thank you all for your valuable support!

Jan Pelsdonk & Jennifer Hoes
Delegates of The Netherlands

Elly Baltus (b.1965)

Billy, the most successful bookcase IKEA has produced. This is a commemoration medal, and homage, to the worldwide experience of cheap design furniture, the joy of DIY, the art of flat-packaging and the culture of easy disposability.

NL-01 IKEA Experience

25 x 55 x 112 mm
2019
bronze, wood, paper,
plastic, print
fabricated



Janko Berman (b.1956)

This medal is designed after - and inspired by a play about Cleopatra's life, written by my son Izak. The reverse features the image of a cobra, the snake Cleopatra used to take her own life. The obverse shows her portrait.

NL-02 Cleopatra's cobra

70 x 70 x 9 mm
2018
ceramic, bronze coloured
cast



Da van Daalen (b.1956)

In ancient Egypt the scarab was seen as a symbol of rebirth. On the medal the beetle works hard to move the dung ball with its hind legs. The golden ball symbolizes medal art, that is brought back to life with every new medal. Over and over again.



NL-03 Scarabee

95 x 9 mm
2019
porcelino, gold
cast

Michiel Deylius (b.1956)

This medal, hand carved in Italian limestone, is based on alphabet 'Fragmentum'.

I designed this alphabet to show the essential part of each character. The use of two characters is a way of combining two messages in one medal: e.g. a specific versus a general one.



NL-04 Fragmentum A/B

100 x 100 x 50 mm
2019
Italian slate
struck

NL-05
Fragmentum Q/V

100 x 100 x 50 mm
 2019
 Italian slate
 struck



Henny van Grol (b.1957)

On the obverse a cross section of an eye, on the reverse brains. Text: WE ALL LOOK - SEEING - IS >< IS - BRAINWORK

NL-06
ZIEN. KIJKEN DOEN WE ALLEMAAL - ZIEN - IS > < IS -
HERSENWERK

7 x 48 x 57 mm
 2016
 marble
 cast



Menno Hiele (b.1988)

This medal examines the possible movements of ash wood, it mimics the movement of the falling seeds. Fraxinus excelsior is one of the most planted tree species in the Netherlands. Unfortunately, it is threatened in its existence by an invasive alien species. No resistant Common ash has been found yet.

NL-07
Nature of men – Fraxinus excelsior

90 x 90 x 80 mm without box
 2020
 wood (ash)
 fabricated

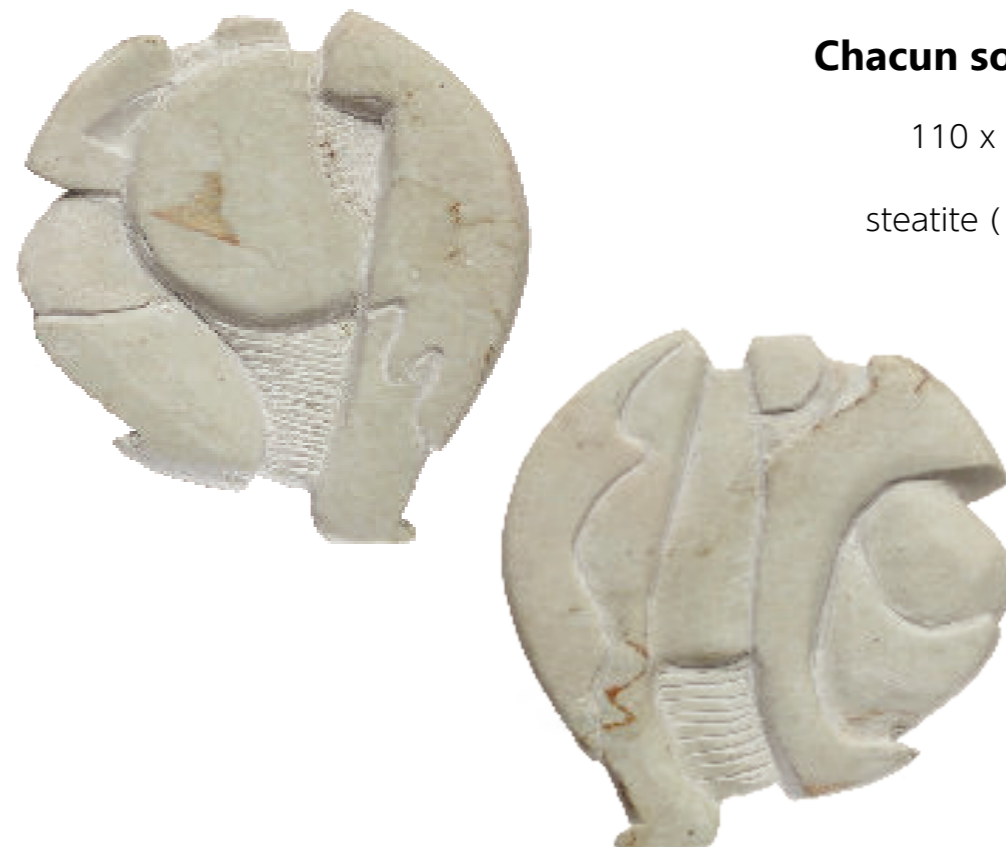


Lina Hodoroaba (b.1963)

Central to my work is the 'Doina' concept, an original Romanian representation of love and connectedness with the earth, otherwise usually depicted in music. In my sculptures and medals, I work exclusively in stone. Themes like woman, animals, music and poetry are major in my work. I'm painting in stones.

NL-08
Chacun son monde

110 x 12 x 80 mm
 2019
 steatite (soapstone)
 fabricated



NL-09
Au bord d'une bouteille

100 x 10 x 90 mm
 2019
 steatite (soapstone), écoline
 fabricated



NL-10
Oiseau et poisson ou 'Qui pêche qui?'

71 x 12 x 62 mm
 2019
 steatite (soapstone)
 fabricated



Jennifer Hoes (b.1973)

My style is to take a conceptual approach in the process of coming up with a design for my medals. And then it is of the utmost importance that my medals are executed with high technical precision. 'Conceptualism' is never an excuse to deliver faint work.

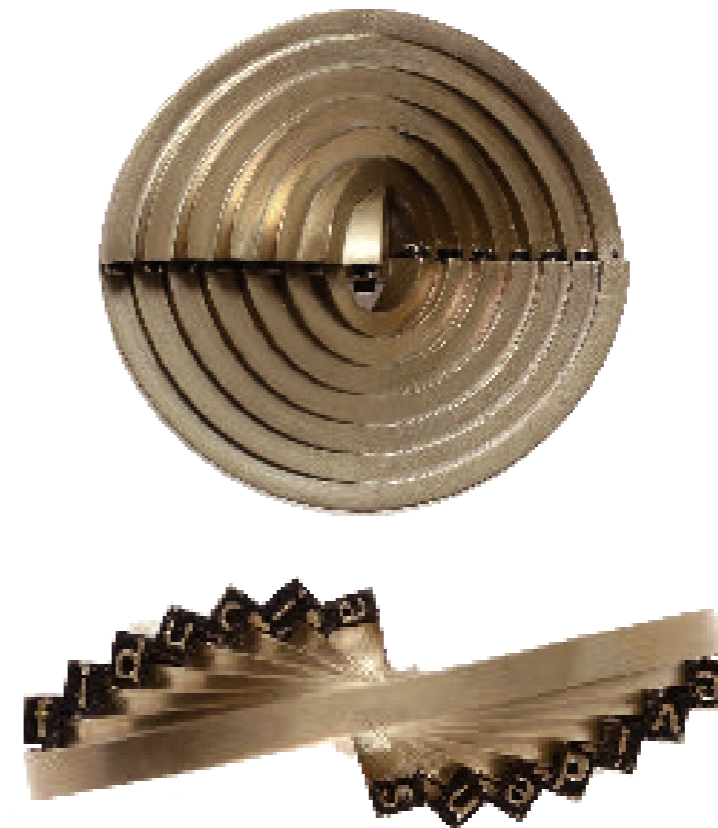
NL-11
Ribbius Peletier-Medal

100 x 100 x 20 mm
 2019
 bronze, felt
 fabricated



NL-12
IRIS-Medal

100 mm
 2019
 bronze
 cast



Joop Hollanders (b.1944)

Designing a medal is like composing music; a melody that develops in many ways, moments of stillness and of tensions that are evoked. A game of volumes, meeting and touching each other, sometimes at little distance in rest. On the medal, the volumes find their place in a natural way.

NL-13
Abstract 1

80 x 80 x 5 mm
2016
ceramic clay
fabricated



Sjaak Jasperse (b.1953)

Japan
Materials: brass box with stainless steel bottom, four copper rivets, titanium lid and hinge of stainless steel and brass. In the box a copper plate in which Japanese characters are sawed out and the country Japan is dripped in lead. On the lid a silver Japanese cherry (sakura).

NL-14
Japan

25 x 104 x 100 mm
2019
silver, stainless steel, brass, titanium, copper, lead
hand made



Carla Klein (b.1943)

I was inspired by her person and made a portrait medal. On the reverse a dancer with the text: Dans Buik Adem (Dance Belly Breath). The American dancer and choreographer Martha Graham (Allegheny, 11 May 1894- New York, 1 April 1991) is considered to be the founder of modern dance.

NL-15
Martha Graham

75 x 85 mm
2019
bronze
cast



Annette Koek (b.1954)

Woodland.
In the woods, sunlight falling through the leaves (komorebi). In this, insects which are under and above the ground. They are the link in the natural cycle of pollination and fertilization. Obverse: what flies, reverse: what crawls.

NL-16
Woodland

90 x 100 x 2 mm
2019
bronze
cast



Marina van der Kooi (b.1951)

Educated as a sculptor in a classical manner, I approached my commissions in a contemporary but classical mode. During the last years my work developed in a more abstract direction: I feel inspired by architecture and landscapes. I play with positive and negative, with convex and concave.

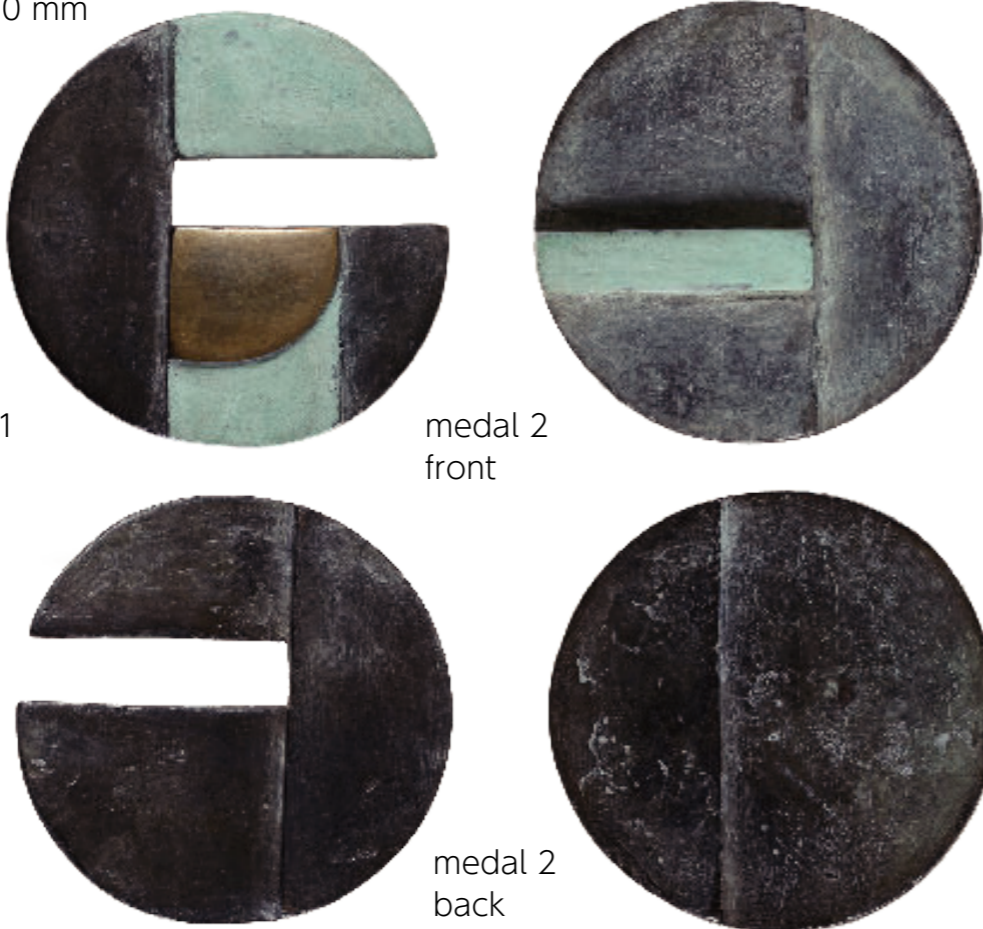
NL-17
FOM (focus on microscopy)

9 x 105 x 105 mm
2016
bronze
cast



NL-18
Double medal

10 x 70 x 70 mm
2019
bronze
cast



Coba Koster (b.1951)

After a fight between the sons of Aymon and Charlemagne, he demanded the invincible horse Bayard to be drowned. One millstone appeared not to be enough, so a second millstone was added around its neck. His owner couldn't face this and turned his head. Bayard lost all hope and drowned.

NL-19
Vier Heemskinderen - The four sons of Aymon

100 x 100 mm
2017
bronze
cast

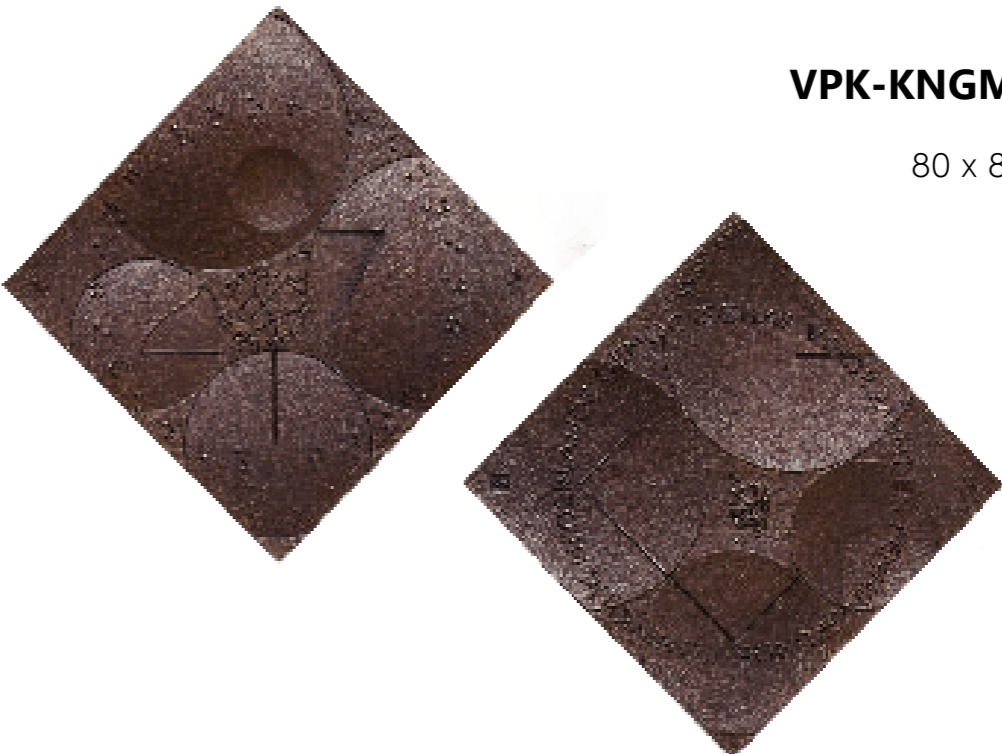


Pier van Leest (b.1958)

A medal placed at its point, issued by the Dutch VPK and KNGMP. One side has different sized shapes, convex and concave, lines, text in braille and small icons. The other side shows text, and elements that are counter-shapes from the front, as well as elements related to coin issuance.

NL-20
VPK-KNGMP 2017

80 x 80 x 6 mm
2017
bronze
cast



Frank Letterie (b.1931)

Medal to commemorate the 700th anniversary of the 'Illustere Lieve Vrouwe Broederschap' at 's-Hertogenbosch.

NL-21
Illustere Lieve Vrouwe Broederschap

90 x 90 mm
2018
bronze
cast



Ad Merx (b.1945)

I have remained close to myself with both medals. The self-portrait does not need further explanation. The other medal is inspired by my legs, crossed, seen from above. We know that it is actually better for the hips to sit with our legs side by side, as seen on the reverse.

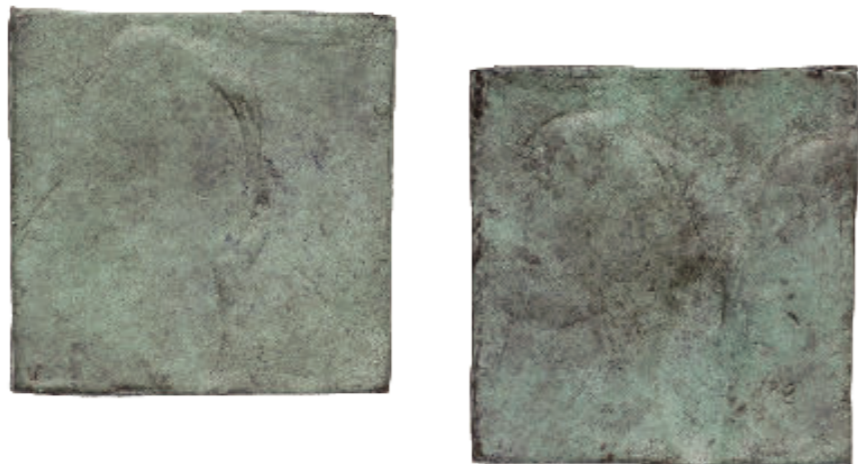
NL-22
Self portrait

70 x 75 x 6 mm
2017
bronze
cast



NL-23
Upper legs

65 x 65 x 5 mm
2019
bronze
cast



Mirjam Mieras (b.1964)

To celebrate the birth of my niece Robin Sophie I designed a Birth Medal made of brass and ribbons. The engraving and different combinations of colourful ribbons make each Birth Medal unique and personal.

NL-24
Birth Medal

disc : Φ 100 x 3 mm
8 x ribbon : 15 x 1000 mm
2019
brass, ribbon
fabricated



Martina Otto (b.1957)

The medal is a citation from 'Faust' by Johann Wolfgang von Goethe: 'Dass ich erkenne was die Welt im Innersten zusammen haellt' (that I see what holds the universe together at its innermost folds). For me it's the most important sentence we all should think about in our public life.

NL-25
Goethe Medal

70 mm
2016
solid and anodized aluminium
fabricated

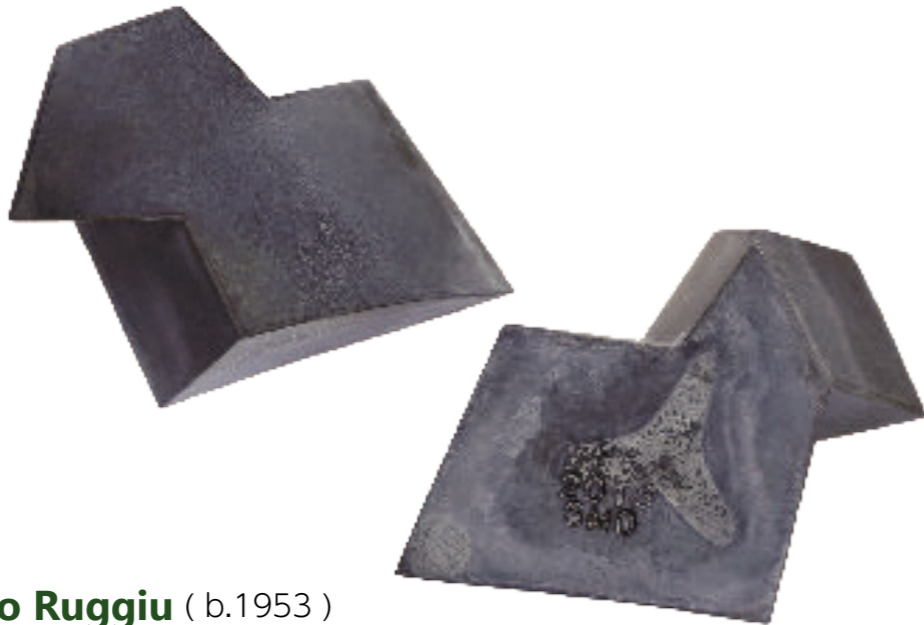


Simon Oud (b.1956)

Shelter 2018 VPK
This hand-sized shelter is a symbol of a resting place. Made from zinc, which was traditionally used as a coating and protection.
In my work I refer to the landscape of my childhood. The Shelter is constructed from zinc plate with a patina that emphasizes timelessness.

**NL-26
Shelter**

35 x 70 x 90 mm
2018
zinc
fabricated



Roberto Virgilio Ruggiu (b.1953)

Kissass for Peace is a tribute to the great poet of the beat generation, Alan Ginsberg. One of his poems, always actual with this title, visualized in a material gesture, in a small sculpture which goes beyond words.
‘...
Only Pathway to Peace, Kissass.’

**NL-27
Kissass for peace**

70 x 40 x 40 mm
2016
polyurethane
cast



Loes Schellekens (b.1955)

Specially made for FIDEM 2020 in Japan, this medal shows the symbol for Japanese-Dutch trade relations, the island of Deshima, in Nagasaki, Japan.
On one side a Dutch VOC trading ship sails the waves. The other side shows the ship in front of the fan-shaped island of Deshima.

**NL-28
Deshima**

80 x 80 mm
2019
bronze
cast



**NL-29
Stairway to heaven**

80 x 60 mm
2016
bronze
cast



Nynke Schepers (b.1935)

Circus

The medal is a result of a visit to the 'Cirque Monti' in Switzerland. It varies on the theme with a tightrope dancer. On this medal, the audience is gazing up. The reverse shows the verb 'tightrope walking'. All humans are tightrope walkers. Hence the rising and falling characters.

NL-30 Circus

85 mm
2018
bronze
cast

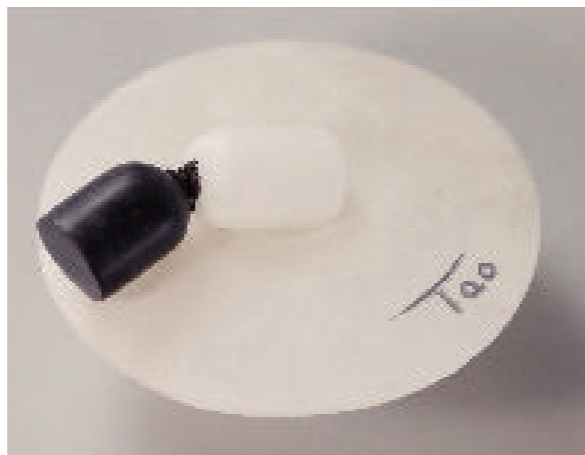


Erica van Seeters (b.1962)

My art medals express my ongoing wondrous research into Aristotle's paradigm: 'there is no empty space'. There is always energy and movement, even in hard solidified material such as stone. The universe has two complementary forces: attracting and expanding. My art medals express energy, light, vibration, frequency: an inspiring miracle.

NL-31 Key of Life

80 x 80 x 26 mm
2019
alabaster stone, diabas stone,
magnetite, ironfilings
sculptured, sawn, sanded



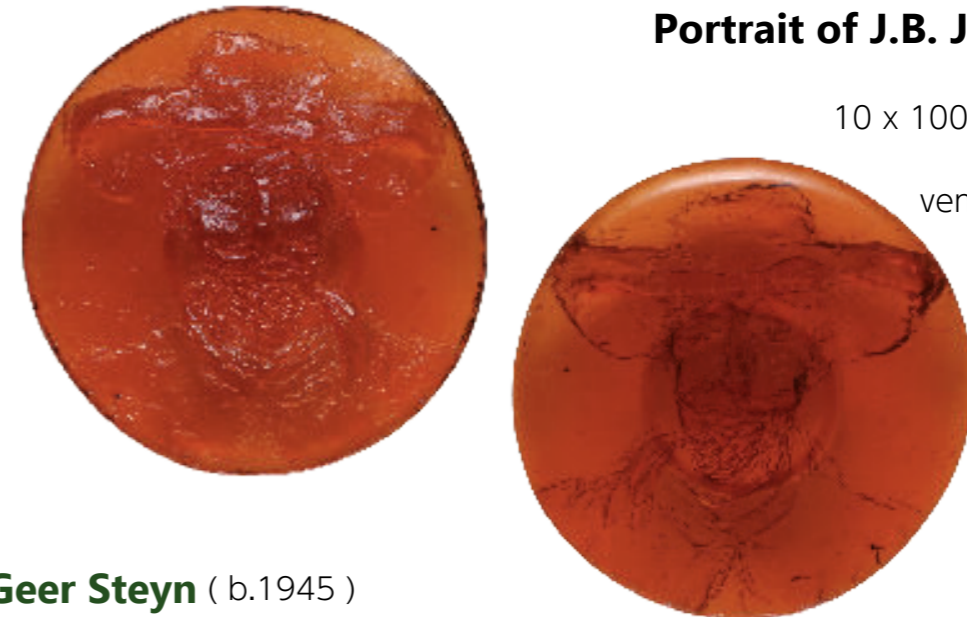
John Sillevis (b.1946)

Portraits on medals have always been a stairway into history, an access to people who lived in other times, but who will be familiar to us by their portraits.

Portraits are also a stairway into the future, because portraits will exist longer than humans; a perspective to eternity.

NL-32 Portrait of J.B. Jongkind

10 x 100 x 100 mm
2017
venetian glass
cast



Geer Steyn (b.1945)

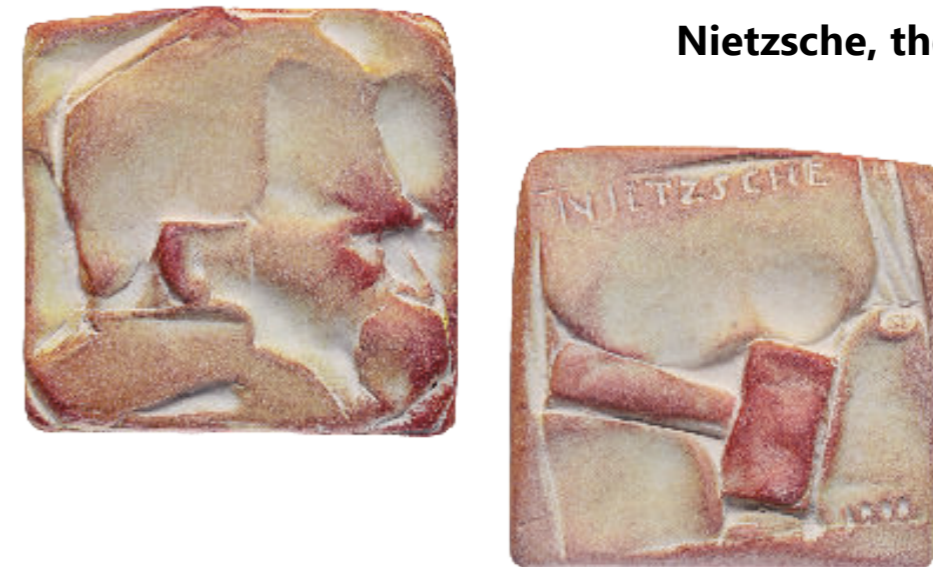
Nietzsche, the final days, 1900.

The portrait shows Nietzsche at the end of his life, sitting and caressed by his sister. The portrait is a metaphor: it shows also the end of the 19th century and his vision on the darkness of the next century.

Darwin has also turned out to be face-defining for the twentieth century.

NL-33 Nietzsche, the final days

80 x 80 mm
2019
teracotta
fabridated



**NL-34
Darwin II**

85 mm
2018
teracotta
fabridated



**NL-35
Darwin I**

85 mm
2018
teracotta
fabridated



Theo van de Vathorst (b.1934)

The Historische Vereniging Oud Utrecht (founded in 1923) is an association focusing on the history of the city and province of Utrecht. The Dia-konessenhuis is the oldest hospital in The Netherlands (founded in 1844), with branches in Utrecht, Zeist and Doorn.

**NL-36
KNO Diakonessenhuis Utrecht**

75 mm
2019
bronze
cast



**NL-37
Historische Vereniging Oud Utrecht**

60 mm
2019
bronze
cast



Linda Verkaaik (b.1956)

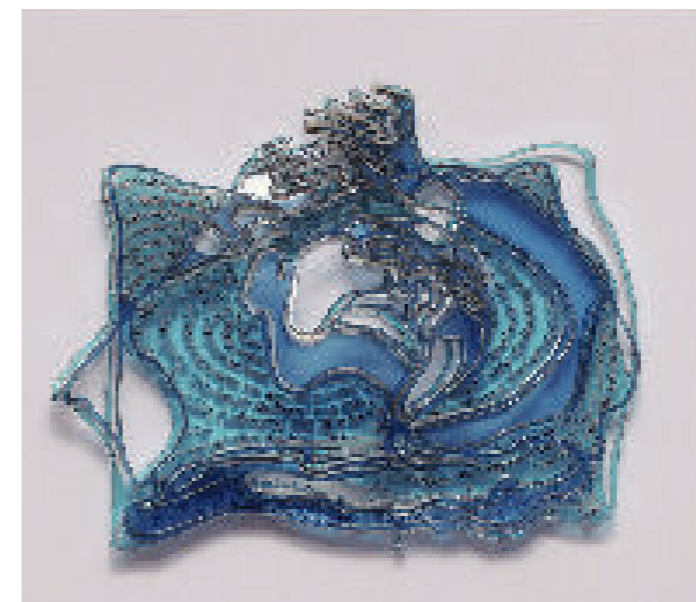
1.My Mother's Duet: a portrait of my mother, which performs a dance with her shadow. Through life, death is visible on both sides of the medal.

2.GRIP: about idealism. A tangible connection between people.

3.GRIP2: literally making the invisible visible, the connection between two peoples hands.

**NL-38
My Mother's Duet**

120 x 95 x 25 mm
2019
acrylaat
fabricated



**NL-39
GRIP**

100 x 100 x 20 mm
2019
acrylaat
fabricated



**NL-40
GRIP 2**

100 x 80 x 30 mm
2019
plaster
handmade



Lia Versteeg (b.1943)

These medals are part of a series. It is about beauty and damage to the universe. The name of this series is 'Waste in space'.

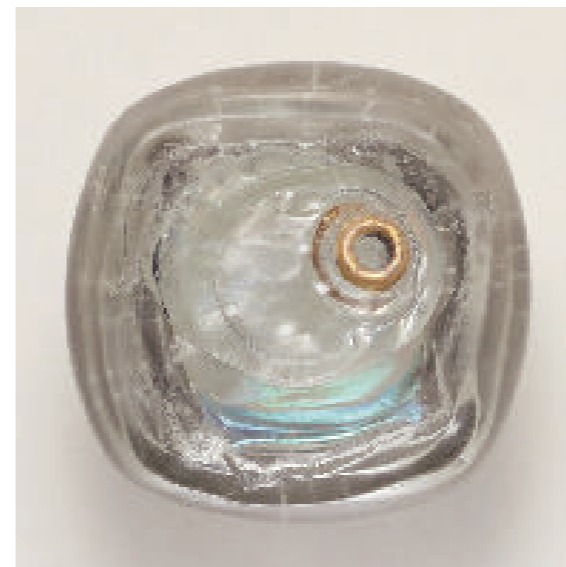
**NL-41
Cosmic Glow II**

80 x 80 mm
2019
glass
fabricated



**NL-42
Cosmic Glow I**

80 x 80 mm
2019
glass, goldluster
fabricated



Marie-José Wessels (b.1952)

In honour of 'Tips'.
She was my friend Elies's pig, kind, bright and mighty. Tips weighed 400 kilos, became 10 years old and had a great life. She taught me a thing or two! Modelled in wax, then cast in bronze, her tail as a stand. (Assignment VPK.)

NL-43
Tips

75 x 100 x 5 mm
2019
bronze
cast



Fusuma (Sliding-door panel) of exhibition hall “ The Seikou Room “